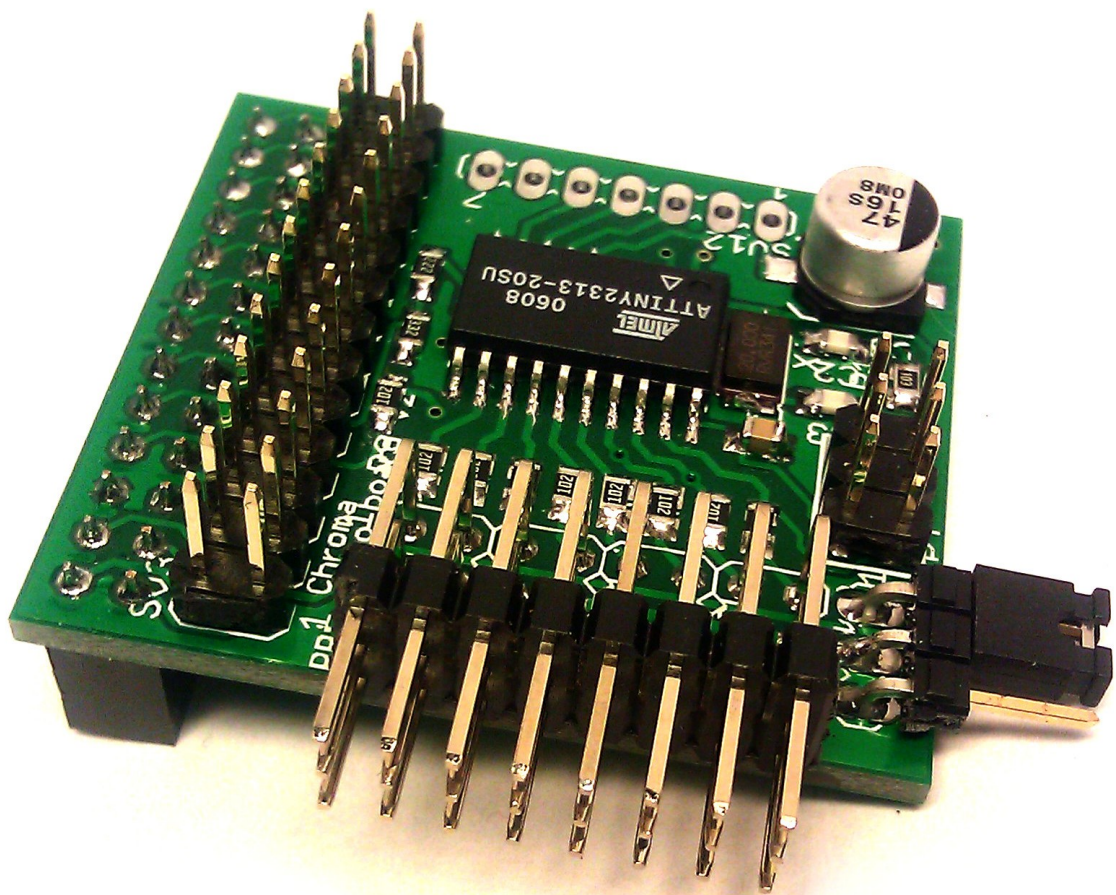


Chroma Servo Board for Raspberry Pi

(Firmware 0.1 and 0.2)

2013-01-20



Content

Setup.....	3
Before connecting the servo board.....	3
Connecting the servo board.....	4
Connecting servos.....	5
Power options.....	5
Getting started.....	7
Using shell.....	7
Using minicom.....	7
Using Python.....	8
The protocol.....	9
Overview.....	9
Servo Test.....	9
Servo All Velocity.....	9
Servo All.....	10
Servo N.....	10
Servo Initial position All.....	11
Servo Bit Rate.....	11
Servo versioN.....	12
New commands for SW version 0.2.....	13
Servo Enable.....	13
Servo Disable.....	13
Changes.....	13

Setup

Before connecting the servo board

Before connecting the servo board to your Raspberry Pi you will need to disable the boot console output to the serial port and disable the default serial login console. If you don't do this before connecting the servo board, your Raspberry Pi might not boot properly.

Disable boot time output

Edit the file: `/boot/cmdline.txt` Remove the following text:

```
console=ttyAMA0,115200 kgdboc=ttyAMA0,115200
```

You can use the command: `sudo nano /boot/cmdline.txt`

Disable serial console

Edit the file: `/etc/inittab` Remove the following line:

```
T0:23:respawn:/sbin/getty -L ttyAMA0 115200 vt100
```

You can use the command: `sudo nano /etc/inittab`

Before connecting the servo board, shutdown RPi and remove power!

Connecting the servo board

The servo board should be mounted above the Raspberry Pi, as seen on the picture below.

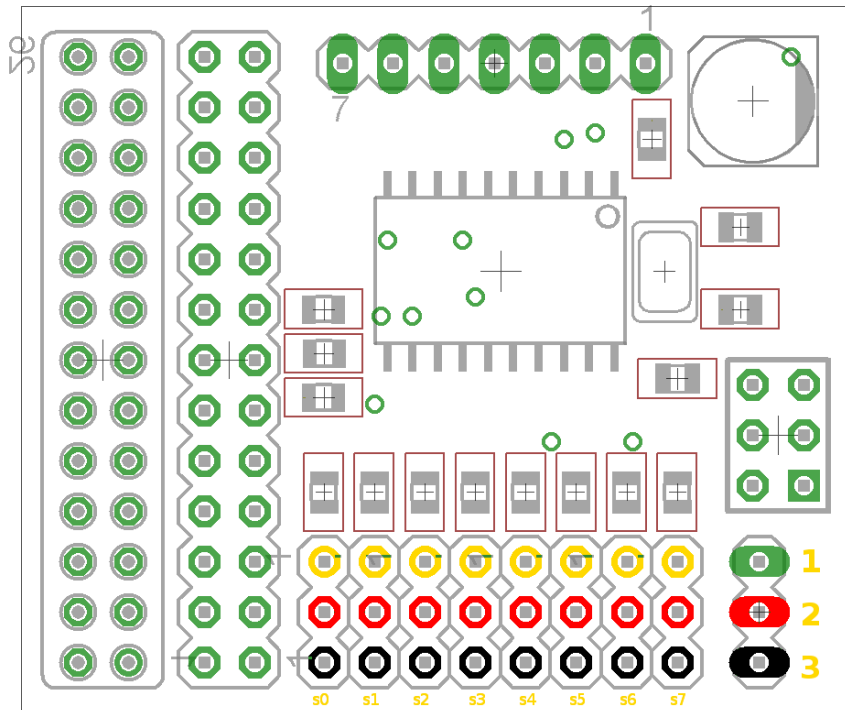


Make sure the the 2x13 female header on the servo board align in both directions with the 2x13 pin header on the Raspberry pi.

Do not connect one servo board on top of another!

Connecting servos

When connecting servos make sure ground wire of servo is closest to the edge of the servo board. See picture below (black – ground, red – 5V, orange – signal). Also make sure the servo connector is aligned.



Power options

There are many ways to power the RPi and the servo board.

WARNING:

When the servo board is powered by the RPi and the RPi is powered by 5V from micro-USB, the poly fuse will make the voltage drop if much current is drawn. Commanding one or more servos to move at full speed at the same time might reboot your RPi and destroy contents of SD-card. The same goes for attaching a servo in run time.

Power connector/jumper

The green-red-black connector/jumper to the right of the servo-connection block on the above illustration is:

1. +5V on Raspberry Pi
2. +5V to servos
3. Ground

With no jumper installed servo +5V is disconnected from Raspberry Pi +5V and servos are powerless unless an ESC/BEC or battery is connected to one of the eight servo connections.

Examples:

- Power: RPi and servo powered from micro-USB connector.
Jumper: Between 1 and 2.
Note: Since power from micro-USB connector goes via poly fuse, voltage will drop even with modest load. RPi might reboot possibly trashing content of SD-card. Can work with one servo and no load.
- Power: RPi powered via micro-USB, Servos powered via connected ESC/BEC.
Jumper: No jumper!
Note: RPi is driven from micro-USB, servos are driven from ESC's BEC.
- Power: RPi and servos powered via connected ESC/BEC. (BEC must be 5V stable)
Jumper: Between 1 and 2.
Note: Do not connect micro-USB!
- Power: RPi powered via micro-USB, servos from external source (battery) 5V.
Jumper: No jumper: Connect external 5V to pin 2 and external ground to pin 3.
Note:
- Power: RPi and servos powered from external source (battery) 5V.
Jumper: Between 1 and 2.
Note: Connect external 5V to servo 5V, connect external ground to servo ground. Since power is supplied via a servo-connector, a servo can not be connected there. Max 7 servos.
- Power: RPi and servos powered from external source (battery) 5V, another way.
Jumper: Between 1 and 2.
Note: Connect external 5V to pin 2 of 2x13 pin header, connect external ground to pin 6 of 2x13 pin header. All 8 servo connectors can be used.
- Power: RPi and servos powered from external source (battery) 5V, yet another way.
Jumper: Between 1 and 2.
Note: Solder external 5V to hole 1 of 7 hole connector
Solder external ground to pin 7 of 7 hole connector
All 8 servo connectors can be used.

Getting started

How to get started to actually control servos. See the protocol section to learn more about the different commands.

Using shell

Set serial port to 9600 bps:

```
stty -F /dev/ttyAMA0 9600
```

Start servo test:

```
echo "st" > /dev/ttyAMA0
```

Stop servo test with any command or a wrong command:

```
echo "serr" > /dev/ttyAMA0
```

Using minicom

Install minicom (Internet connection required)

```
sudo apt-get install minicom
```

Start minicom in setup mode as root to configure it, only needed once:

```
sudo minicom -s
```

Select "Serial port setup"

Press "a" and change Serial device to /dev/ttyAMA0

Press enter

Press "e" and choose 9600 bps by pressing "c".

Press enter

Press enter to exit "serial port setup"

Select "Screen and keyboard"

Press "q" to enable local echo.

Press enter to exit "Screen and keyboard"

Select "Save setup as dfl" to save this as your default setting.

Select "Exit from Minicom"

From now on you can start minicom and issue commands to the servo board when you like:

```
minicom
```

Just try issuing the servo test command:

```
st
```

Using Python

To use the serial port from Python, you will need the serial module:

```
sudo apt-get install python-serial
```

Sample Python script:

```
import time
import serial

s = serial.Serial("/dev/ttyAMA0",9600)

s.open()

s.write("st\n")      # Servo test command
time.sleep(5)       # Wait for 5 seconds
s.write("serr\n")   # Wrong command to stop servo test

s.close()
```


The protocol

It's a small and simple ASCII protocol. Start of command is "s" and end of command is enter (line feed or return). Default serial port setting of servo board is 9600 8N1.

Every command will either be answered with an "ACK" or a "NACK" if not understood. The only exception is the firmware version command "sn" that will answer with the string "01" for firmware version 0.1.

The only command that makes a persistent change (remembered after power loss) is the Set Initial position All command: "sia".

Overview

Command	Name	Description
st	Servo Test	All servos move slowly between -100% and 100%
sa	Servo All	Change position of all 8 servos with one command
sav	Servo All Velocity	Change speed for all 8 servos with one command
s0 ... s7	Servo N	Set position (and speed) for servo N.
sia	Servo Initial position All	Set default position for all 8 servos. Saved and used at power up.
sbr	Servo Bit Rate	
sn	Servo versionN	Returns firmware version "NN". Example "01" for version 0.1.

Servo Test

Has no parameters and will move all servos in sync between -100% and 100% at about 0.2% per millisecond. Any command or a wrong command will abort.

Servo All Velocity

Set speed at which servos should move when using "sa"-command.

Takes 0 to 8 parameters. Any parameter omitted is interpreted as 0. Parameters is servo speed in steps of 10% per second from 1 to 255 or 0 for fastest possible speed. First parameter is speed for first servo, second parameter is speed for second servo and so on.

Examples:

```
sav 1 10 20 20
```

Sets first servo to move at slowest possible speed: 10% per second, second servo at 100% per second, third and fourth at 200% per second. Servo five to eight will move as fast as possible.

```
sav
```

Sets all servos to move as fast as possible

```
sav 100
```

First servo is set to move at 1000% per second. Remaining seven is set to move as fast as possible.

Servo All

Set position for servos

Takes 0 to 8 parameters. Any parameter omitted is interpreted as 0.

Parameters is servo position in promille from -1000 to 1000 (-2500 to 1900 is allowed for going beyond defined range). First parameter is position for first servo, second parameter is position for second servo and so on.

Examples:

```
sa 0 1000 500 -1000
```

Moves first servo to 0%, second to 100%, third to 50% and fourth to -100% the remaining 4 will be moved to 0%.

```
sa
```

All eight servos are moved to 0%

```
sa -1500
```

First servo is moved to -150% all other servos are moved to 0%.

Servo N

Move one servo to a given position at a given speed.

Takes 0 to 2 parameters. Any parameter omitted is interpreted as 0.

First parameter is servo position in promille from -1000 to 1000 (-2500 to 1900 is allowed for going beyond defined range)

Second parameter is servo speed in steps of 10% per second from 1 to 255. 0 for fastest possible.

Examples:

```
s0 1000 0
```

Will move the first servo to 100% Only physical speed of servo limits speed.

```
s0 1000
```

Will move the first servo to 100% Only physical speed of servo limits speed. The same as above

```
s1 500
```

Will move the second servo to 50% Only physical speed of servo limits speed.

```
s6 -1000 5
```

Will move the seventh servo to -100% at roughly 50% / second.

```
s2 1300 1
```

Will move the third servo to 130% at roughly 10% / second.

If the second parameter is given and is different from 0, the given speed will be used in subsequent "sa"-commands overriding any previous "sav" commands.

Servo Initial position All

Sets default position for servos, used at powerup.

Takes 0 to 8 parameters. Any parameter omitted is interpreted as 0.

Parameters is servo position in promille from -1000 to 1000 (-2500 to 1900 is allowed for going beyond defined range). First parameter is position for first servo, second parameter is position for second servo and so on. This command will not move any servo, just save the values to be used on power up.

Examples:

```
sia 0 1000 500 -1000 -780 -50 -5 -2000
```

At every power up first servo is set to 0%, second to 100%, third to 50%, fourth to -100%, fifth to -78%, sixth to -5%, seventh to 0.5% and eighth to -200%.

Servo Bit Rate

Set bit rate to be used in serial communication.

Takes 0 to 1 parameter. Any parameter omitted is interpreted as 0.

Takes a number 0..6 for bit rate according to below table:

Parameter	Bit rate
0	9600 (default)
1	19200
2	38400
3	57600
4	115200
5	230400
6	500000

230400 bps and 500000 bps is not working in firmware 0.1.

Examples:

```
sbr 2
```

Serial port speed is changed to 38400 bps. ACK is sent before changing speed.

Servo version

Returns firmware version.

Takes no parameters.

Example:

```
sn
```

Returns firmware version "NN". Example "02" for version 0.2. Only command that will not return ACK/NACK.

New commands for SW version 0.2

Servo Enable

Enables servo pulses output (default)

Takes no parameters

Example:

```
se
```

Servo Disable

Disables servo pulses output

Takes no parameters

Example:

```
sd
```

No output pulses will be sent to servos, commands will be accepted as usual, and any changes to servo positions will be seen upon giving the "se"-command.

This makes it possible to save power by "disabling" servos.

Changes

Version 0.1

- First version.

Version 0.2

- New command Servo Enable "se".
- New command Servo Disable "sd".
- Pulse timing is more accurate and does not vary by pin.